

Edition: May 2009
Version: 9051

Division: 07
Section: # 07555

PLY-GUARD

PROTECTION BOARD FOR THE
WATERPROOFING MEMBRANE

DESCRIPTION

PLY GUARD is an extruded polypropylene board with a core structure to allow protection & light drainage.

PLY GUARD is a light weight and semi flexible material that can be quickly and easily installed to minimize the damage that can occur on the waterproofing membrane. A valuable buffer against harmful friction.

Special features of PLY GUARD include:

- Can be installed by any operator simply by using a scale, ruler and cutting blade.
- No experience or special training is needed.
- Comes in an ideal size format, suit any building project-regardless of size or stage of construction
- Needs no special storage facilities
- Can be installed under any weather conditions
- A lighter, flexible material means faster installation, that can reduce your labor costs

APPLICATIONS

Complete Protection Solution

PLY GUARD can be used as an effective barrier to protect wooden floor boards, wooden panels, railings, marble, granite, carpet and other surface materials that are subjects to damage during construction. They are capable of absorbing shock weight trauma and other violent forms of chemical and physical damage that threatens the delicate and sensitive areas on site.

PACKAGING

PLY GUARD comes in a standard size format (1 by 2 meters). The result is such that wastage is minimized. Packaging, storage and handling are easy.

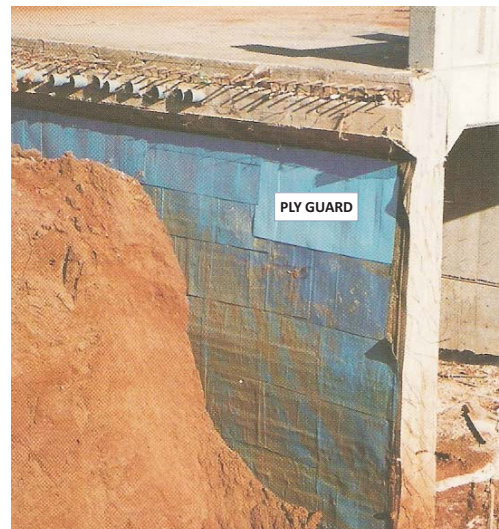
Other sizes are available upon request.

PLY GUARD is compatible with common waterproofing membranes:
APP, SBS, TPO, and EPDM

INSTRUCTIONS FOR USE

- Features:
Your best protection against damage.

- Chemical Features:
The chemical make up of PLY GUARD is such that most damage causing entities are unable to penetrate. PLY GUARD resists to most liquids-including acids, detergents and oils.
PLY GUARD can be installed under heavy rain, wind or any other hazardous conditions.



- Structural Features:

Versatile, light weight, easy to cut and simple to install, PLY GUARD is designed to be the perfect solution for surface protection.

PLY GUARD is made up of two layers held together by hundreds of tiny, thin cellular walls that traverse longitudinally side by side to create a powerful cushioning effect against an application of weight. They are constructed from an innovative material that's tough enough to handle the roughness of a construction site, while flexible enough to use around corners, tricky protrusions and difficult to reach places.

Table# 1

Technical Properties of the Raw Material:

<u>Test</u>	<u>Specs</u>	<u>Unit</u>	<u>Result</u>
Tensile strength	ASTM D 638	N/mm ²	27
Elongation at yield	ASTM D 638	%	7
Flexural Modulus	ASTM D 790	N/mm ²	1450
Izod Impact strength (at23°C)	ASTM D 258	J/m	500
Izod Impact strength (at20°C)	ASTM D 258	J/m	100
Vicat Softening point (10N)	ASTM D 1525	°C	151
HDT(0.46N/mm ²)	ASTM D 648	°C	95

Table# 2

Technical Properties of the PLYGUARD Boards:

<u>Test</u>	<u>Specs</u>	<u>Unit</u>	<u>PLYGUARD</u>			
Thickness	UNI EN 964/1	mm	2.2	3	4	5
Resistance to Puncture Load	ASTM E 154-88section10	N	880	950	1380	1430
Displacement	ASTM E 154-88section10	mm	38	30	45	39
Tensile Strength	ASTM D 638	Kg	20	30	38	50
Total Elongation	ASTM D 638	%	170	280	220	205
Charpy Impact Test	ASTM D 256	Joule	2.8	2.8	3.5	4.5

- The above results are for indication purposes only.

Exact results can be obtained by testing a sample of the PLY GUARD.

- Allow 10% Tolerance for the thickness.

CODE	DESCRIPTION	COLOR	UNIT OF SALE	QUANTITY	BASE UNIT
DG222220	PLY GUARD Protection, 2.2mm [1M x 2M]	Blue	Board	2	sqm
DG223020	PLY GUARD Protection, 3mm [1M x 2M]	Blue	Board	2	sqm
DG224020	PLY GUARD Protection, 4mm [1M x 2M]	Blue	Board	2	sqm
DG225020	PLY GUARD Protection, 5mm [1M x 2M]	Blue	Board	2	sqm
DG226020	PLY GUARD Protection, 6mm [1M x 2M]	Blue	Board	2	sqm



EXPORT ORDERS: Product size and packaging may change slightly to accommodate export shipping requirements.
 WARRANTY: We warrant our materials to be of good quality and will replace materials found defective, providing however, that the buyer shall examine the materials when received and promptly notify use of any defect before the materials are used or incorporated into a structure of which they are intended. Unless otherwise agreed to in writing, this warranty shall extend only to comply with specifications of materials manufactured and published by PLYDEX Company and made available to the buyer at request. We cannot warrant nor in any way guarantee particular methods, use or applications and performance, nor can we warrant that the materials will be suitable for any intended use. This warranty is in lieu of all others expressed or implied and may not be extended representatives, written sale information or drawings, nor do our distributors or salesmen or any representatives of distributors or of this company have any authority to extend any guarantee beyond that outlined above or to waive the limitations of the seller's liability.